



Annual Report

2023

ABOUT US

Khiri Reach is the independent charity arm of Khiri Travel. The foundation was registered in 2007 and operates as a charity platform where people and local grassroots organizations can collaborate to create positive change in terms of social and environmental issues across Thailand, Laos, Vietnam, Myanmar, Sri Lanka, Indonesia, and Cambodia, countries where Khiri Travel operates.

VISION

Our vision at Khiri Reach is to create a world where all individuals have access to basic human needs, education, and healthcare. We envision a future where poverty and inequality are minimized, and every person has the opportunity to lead a fulfilling life regardless of their socio-economic background.

We believe that by working together, we can provide sustainable solutions to the challenges faced by marginalized communities in Asia, enabling them to thrive and contribute positively to society. Our ultimate goal is to empower individuals to reach their full potential and build a brighter future for themselves, their families, their communities, and the planet on which they live.



MISSION

Our mission at Khiri Reach is to improve the lives of individuals and communities in Asia by providing access to essential resources and empowering them to become self-sufficient. We are committed to addressing the root causes of poverty, inequality, and lack of opportunity through sustainable and impactful programs in the areas of empowerment, emergency response, wildlife, forests, and water.

We collaborate with local partners and stakeholders to ensure that our efforts are culturally sensitive, community-led, and tailored to the specific needs of each region.



WE BELIEVE that by
working together,
we can provide sustainable
solutions to the challenges faced in
Asia, contribute positively to
society, and foster a healthier planet
for all living beings.

Principles of Khiri Reach

Everything we do in Khiri Reach is guided by our operating values.

- **We create** relationships based on trust
- **We cut** through complexity in our processes
- **We engage** in transparent collaboration
- **We aim** to live up the Khiri Values we are promoting
- **We get** involved directly with local grassroots organizations and/or individuals
- **100% of** all Khiri Reach donations from donors will go to beneficiary projects



Khiri Reach

Grants

Beside receiving donations and support, we also express our commitment by providing small grants for local grassroots organizations or individuals in our seven focus countries (Cambodia, Indonesia, Laos, Myanmar, Thailand, Sri Lanka and Vietnam) within 5 thematic areas: Empowerment, Forest, Water, Wildlife and Emergency Response.

We have dedicated people to manage every step of our granting process and make sure of the transparency and positive impact on the ground.

3 types of project we constantly looking to support:



Emergency Response

We are committed to responding to emergencies and helping people rebuild their lives. Natural disasters and social conflicts in the region inflict significant losses on individuals and families, particularly in poor and vulnerable communities.

Emergencies such as natural disasters and health crises often occur unexpectedly across Asia. At Khiri Reach, we are dedicated to responding promptly by engaging our business partners, gathering in-kind and monetary support, and directly distributing aid through our Khiri country programs to the affected areas.



Khiri Regenerative Travel Fund

Since 2018, Khiri Travel has charged its guests US\$1.50 per person per day on a discretionary opt-in basis. These amounts go solely and exclusively to Khiri Reach projects.

Because Khiri Travel absorbs the administrative costs, a full 100% of the donations from Khiri Travel's guests go to the projects.



KHIRI REACH understands
that positive changes need to be
made by partnering and
collaborating with others.

Partnership for Positive Change

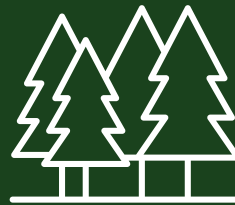
With the Partnership for Positive Change, we wish to link our partners, donors and volunteers with local grassroot projects, to find ways to solve pressing issues across the region, such as,



Healthcare



Access to clean water



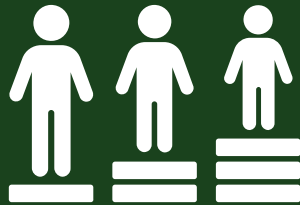
Protection of local
fauna and flora



Education



Plastic pollution



Equity



Provide support for
the less fortunate



Project Site Visit

Many of the project sites and organizations can be visited during your or your guests' itinerary. You can meet the project's beneficiaries, learn about the impacts of the project you decide to support, and experience how you personally contribute to a good cause. Our goal is to create sustainable income sources for our programs, and often, we can achieve this by bringing you or your guests on-site. However, other projects depend more on ongoing financial support from donors.

- **We DO NOT** offer any guest visits to the children and minority group-related projects as per our Child Safeguarding Policy and People Interaction Policy.
- **Not** every animal/wildlife-related project is open for tourist visits.

If you are interested in a project site visit, please contact the country's sales team for more information.



KHIRI REACH AMBASSADORS PROGRAM

All team members who have been with Khiri Travel for at least 6 months and are interested in community development in their respective country can voluntarily register for the Khiri Reach Ambassador Program.

An Ambassador will reach out to the local non-profits, grassroots organizations, and communities in their respective country to identify meaningful projects and act as Khiri Reach representative to distribute and/or mobilize financial or in-kind support.

Ambassadors will have 5 days/year to visit project sites, meet the beneficiaries, learn about the progress, and collect brief information. All travel costs and overhead expenses will be covered by Khiri Travel.

Ambassadors will be invited to collaborate with Khiri's social media channels. They will also be recognized for their contributions.



KHIRI REACH AMBASSADORS PROGRAM



A close-up photograph of a person's hand and forearm, with several small green leaves scattered across the skin. The hand is open, holding a small sprig of leaves. The background is a blurred natural setting.

KHIRI REACH AWARDS

Khiri Reach Honored with **Skal Sustainable Tourism Award 2023**.

We achieved the esteemed 2023 Skål Sustainable Tourism Award in the Tour Operators – Travel Agents category. This remarkable achievement was celebrated during the Awards Ceremony, which took place as part of the 82nd Skål World Congress held in Malaga, Spain on November 2.



SKÅL

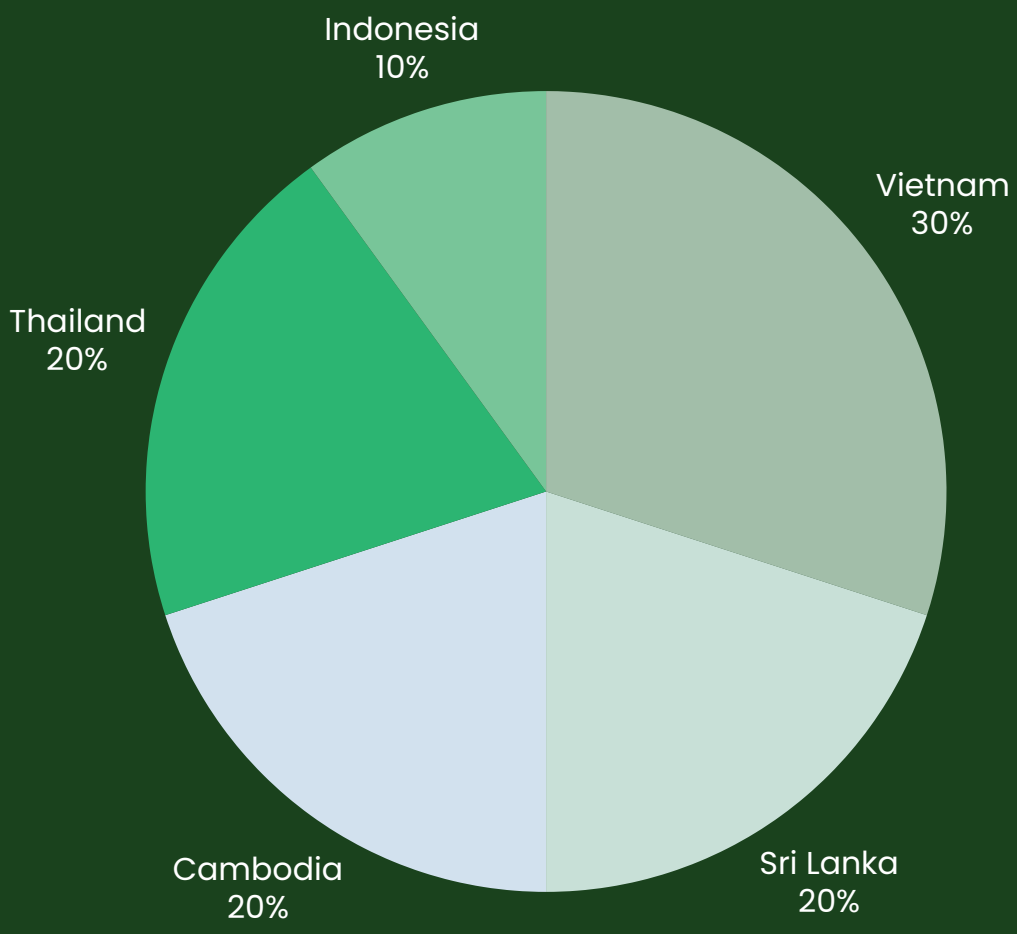
INTERNATIONAL
Connecting Tourism Globally

SUSTAINABLE TOURISM AWARDS



KHIRI REACH ACCOMPLISHMENT

In 2023, Khiri Reach had supported in total of **10** projects in which **2** are conservation related projects and **8** are communities project



ONE MILLION TREES, WILDLIFE ALLIANCE REFORESTATION PROJECT

The purpose of the Wildlife Alliance Reforestation Project is to repair the destroyed forest patches that were illegally logged and burned for state land grabbing. The 1 Million Tree Nursery in Chi Phat focuses on the Southern portion of the Cardamoms and has reforested 817 ha of deforested land in 2010-2015. The project then stopped due to lack of funding. The greenhouse and shade nets fell into disrepair and had to be replaced in 2023, although with fewer shade nets for 187,392 saplings instead of 1 million.

Khiri Reach donated US\$15,000 to the One Million Tree reforestation project in Koh Kong and Sihanoukville provinces in Cambodia. The new donation from Khiri Reach is helping the nursery expand capacity from 190,000 saplings to 265,000, all under net shades to help them grow.



www.wildlifealliance.org



SEAGRASS RESTORATION PROJECT

This **Seagrass Restoration** project main goal is to transplant one hectare of seagrass within a year, ensuring the long-term survival of seagrasses. The project also involves conducting research on seagrass restoration. Over the coming years, OCEA aims to inspire future major projects in other areas to restore seagrass meadows, thereby supporting Sri Lanka's climate, fisheries, and coastal livelihoods.

Khiri Reach has been committed to Sri Lanka's first major Seagrass Restoration project by OCEA (Ocean Conservation & Education Alliance) in Kalpitiya. Khiri Reach committed to supporting 0.5 hectares of seagrass restoration for one year.



PROJECT T - TREE FOR LIFE

Khiri Reach has collaborated with an NGO called Cambodia Rural Students Trust, which has initiated Project T- Trees for Life. They are raising funds for a tree planting program aimed at bringing much-needed cover and protection to the communities in the area. Families and community members will receive the knowledge necessary to ensure the successful growth and flourishing of these trees, thereby creating a healthier, brighter, and greener environment to live in.



www.cambodiaruralstudentstrust.org/projectt



EMPOWERING PEOPLE WITH DISABILITIES

PUSPADI Bali formed a partnership with Khiri Reach, a collaborative program aimed at providing wheelchair assistance to individuals with disabilities in Bali.

The direct beneficiaries of this program are 5 women and 11 men, in total of 16. Among them, there is 1 child, 3 teenagers, and 12 adults. In terms of occupation, there are 3 students, 4 part-time workers, 7 entrepreneurs, 1 farmer, and 1 livestock farmer.

These 16 wheelchairs are standard recycled wheelchairs provided to support their daily activities such as work, school, and community engagement. The aim is to enhance their self-confidence, mobility, and independence, enabling them to navigate their daily lives with greater ease and more independence.

3 GOOD HEALTH
AND WELL-BEING



10 REDUCED
INEQUALITIES



www.puspadibali.org/



SUNSHINE VILLAGE FOUNDATION

Khiri Reach donated 14,000 baht to the Sunshine Village Phuket Foundation for renovation of the day-care toilet.

In the aftermath of the Tsunami that hit Phuket, members of the Lions Club of Phuket Andaman Sea decided to be involved in a longer term project to help the victims of the tragedy. Helping Children in need became the main objective of the Club, and the idea of creating a village slowly began to grow.

At the moment, the Sunshine village is constantly caring for approximately 90 children in a family environment. Their aim was to provide an atmosphere for the children which would be as close as possible to a normal family life. One of priorities was to give the children a good education that would enable them a better future as they grew into adulthood.

3 GOOD HEALTH
AND WELL-BEING



Phuket, THAILAND

www.phuketsunshinevillage.org



DUANG PRATEEP FOUNDATION

Khiri Reach made a heartfelt visit to the Duang Prateep Foundation, located in the Khlongtoey 'slum' district of Bangkok. During this visit, they generously contributed equipment and food supplies worth 12,000 Thai Baht to the school, helping the underprivileged students.

The Duang Prateep Foundation, with a history dating back to the early 1970s, is a beacon of hope in the heart of Bangkok's impoverished community. Beyond offering education to children living in the slums, it operates rehabilitation centers, equips itself with firefighting resources, runs a credit union, and provides a range of services aimed at improving the lives of some of Bangkok's most disadvantaged residents.



Bangkok,
THAILAND



<http://dpf.or.th/en/>



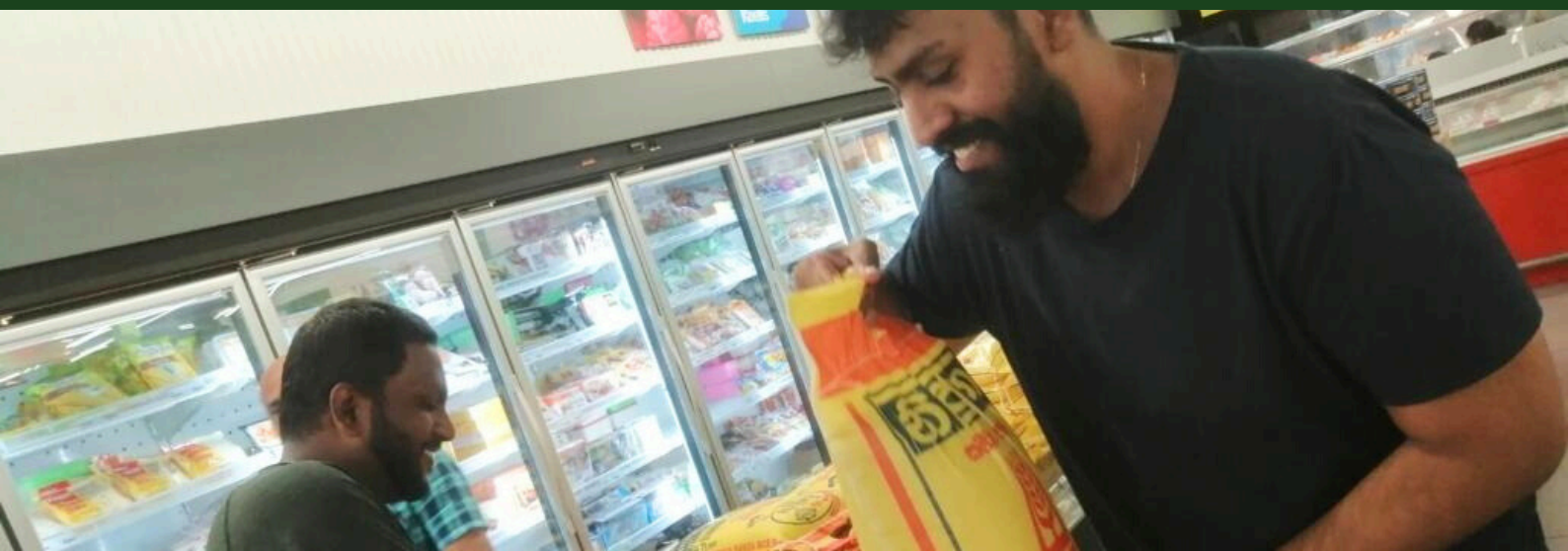
THE BUDDHA JAYANTHI CHILD DEVELOPMENT CENTER

During this visit, Khiri Reach Ambassadors extended their support by providing essential provisions like dry rations and meat items. This donation was valued at approximately \$300.

The Buddha Jayanthi Child Development Center is a registered orphanage under the code SG/PCCS/KG/2017/12. Established on the 1st of July in 1962, it primarily serves as a safe haven for needy girls. The center's mission revolves around furnishing these girls, approximately 50 in number, with shelter and access to education, nutritious meals, proper sanitation, and essential healthcare. The girls who find refuge here often come from troubled backgrounds, having endured mistreatment, abuse, or harassment within their own families, or they may have tragically lost their parents. While government authorities have provided some support to the center, their financial situation has grown increasingly precarious since the economic crisis of the past year, making it difficult for them to adequately provide for the children.



<https://www.acbc.lk/portfolio/buddha-jayanthi-child-development-center/>



FOODBANK VIETNAM

Our team of Khiri Reach Coordinators and Ambassadors, along with other volunteers, had the privilege of joining hands with Food Bank Vietnam, a local non-profit organization established in 2016. They work tirelessly to collect excess food ingredients from networks of restaurants, hotels, manufacturers, and other sources to distribute them to those in need. Moreover, they organize campaigns, events, and workshops to raise awareness of food waste and food security in the community.



Ho Chi Minh City,
VIETNAM

<https://foodbankvietnam.com/ve-food-bank-viet-nam/>



FOODBANK VIETNAM-1

Khiri Reach and Food Bank Vietnam delivered 150 meals to elderly people residing in the Vinh Son Nursing Home, located in the Binh Thanh district of Ho Chi Minh City.

This is just the first step of our 10-week support program, with the goal of reducing food waste and fighting hunger in the community.



Ho Chi Minh City,
VIETNAM



FOODBANK VIETNAM-2

Khiri Reach together with Food Bank Vietnam delivered 300 meals to the children of Anh Linh Charity Children House, district 7, Ho Chi Minh City. Three Khiri Reach Ambassadors from the Khiri Vietnam team joined to cook free meals and organise fun activities.

This is the second activity of a 10 week support program between Khiri Reach and Food Bank Vietnam, with the common goal to reduce food waste and fight against hunger.



Ho Chi Minh City,
VIETNAM



FOODBANK VIETNAM-3

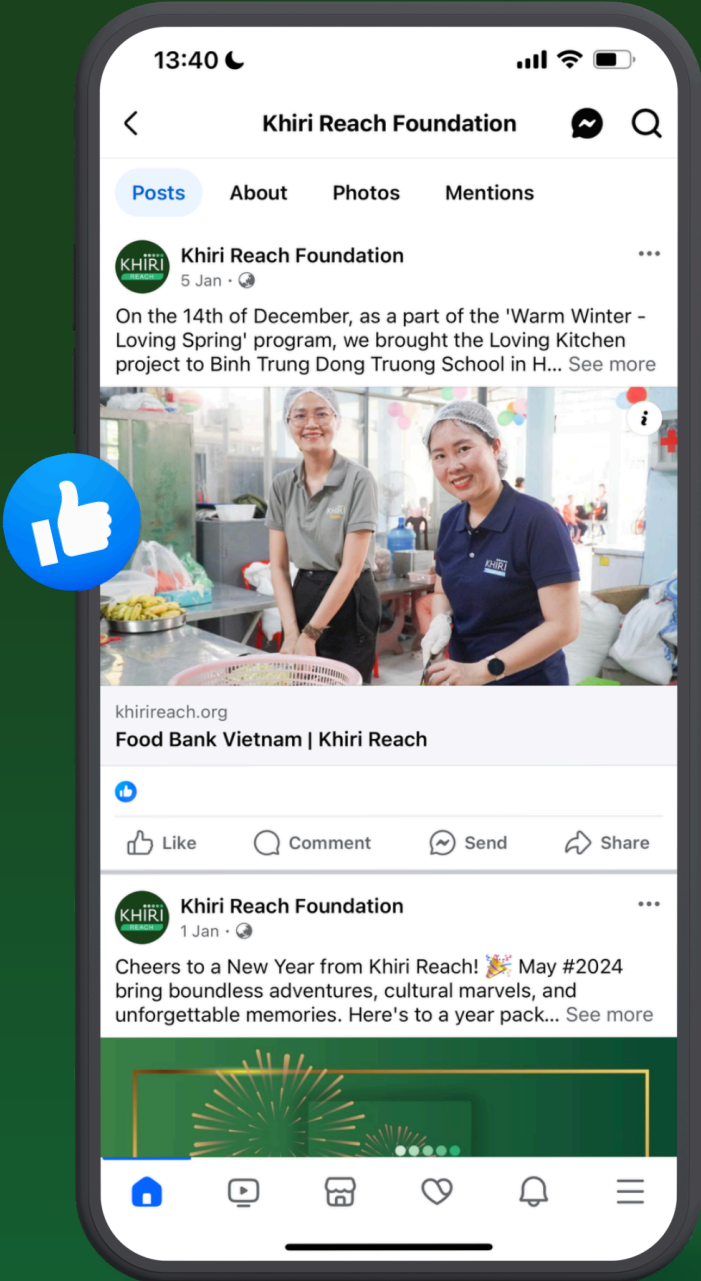
Khiri Reach Ambassadors provided support by assisting with the preparation and serving of meals for 80 people at Binh Trung Dong Truong School in Ho Chi Minh City as part of the ‘Warm Winter – Loving Spring’ program, the Love Kitchen project.



LOCATION OF REACH PROJECTS



KHIRI REACH SOCIAL MEDIA

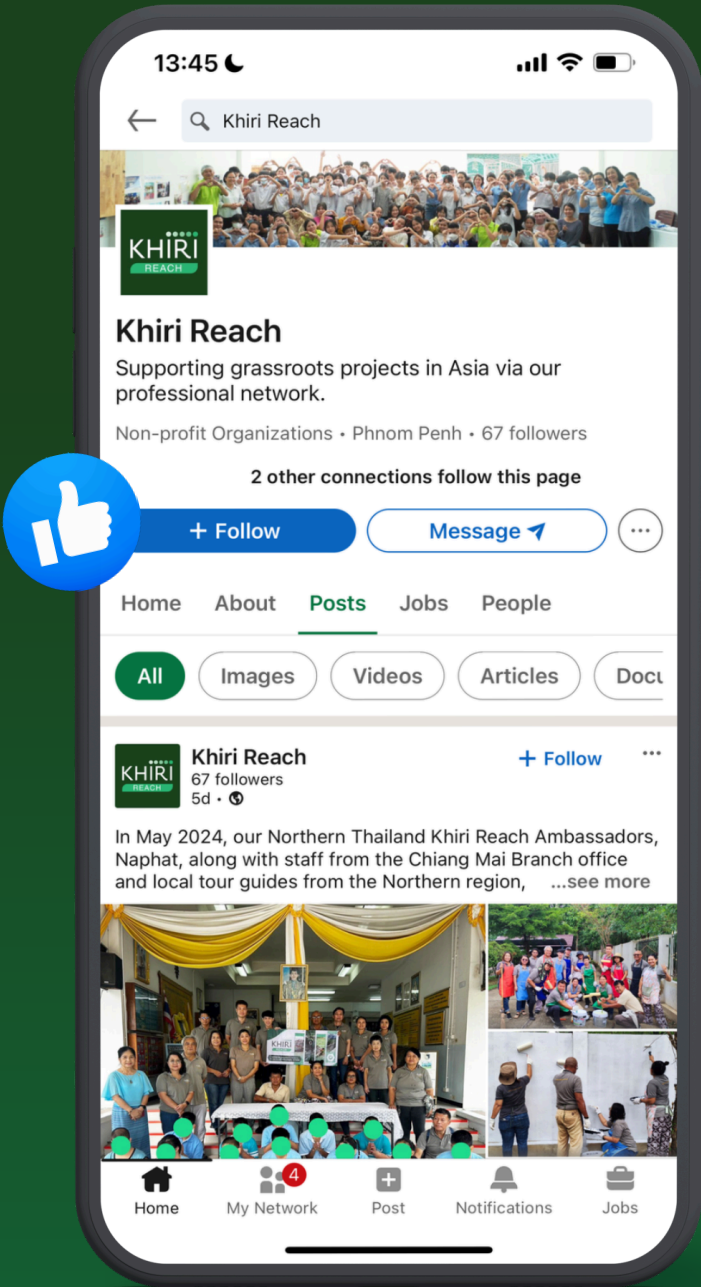


Facebook: Khiri Reach Foundation

Instagram: khirireach

Khiri Reach constantly shares updates on projects and interesting information about Khiri Reach, as well as other relevant information.

KHIRI REACH SOCIAL MEDIA



LinkedIn: Khiri Reach

Twitter: @Khiri_Reach

CONTACT US

For project grants and to partner for positive change at
sustainability@khiri.com

khirireach.org